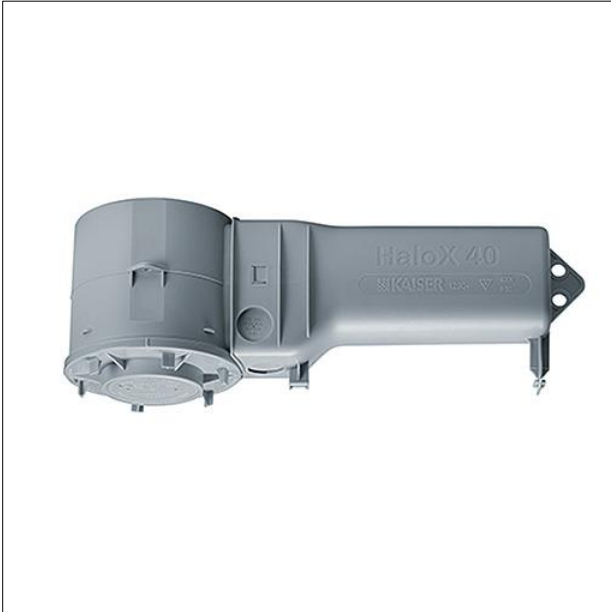
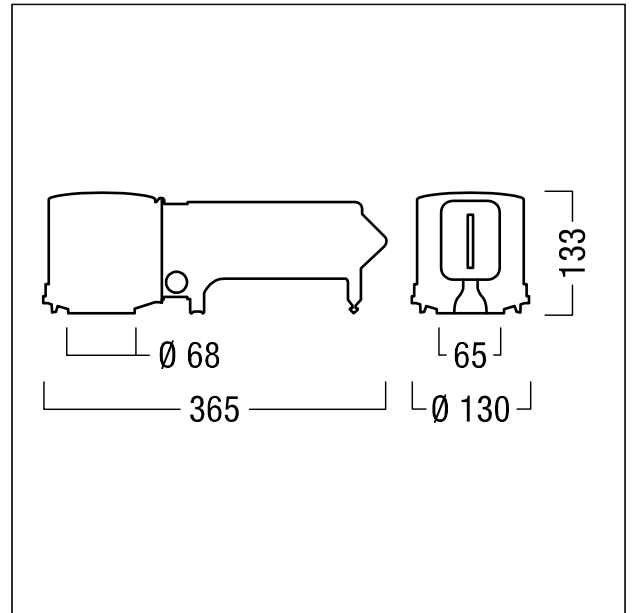


Plastic casting surround for concrete ceil. for tool-free installation of RESCLITE and VOYAGER Star recessed emergency luminaires (MRCR/MRWR- with 85mm cover) in concrete ceilings and concrete walls. Ready for conduit installation. Dimensions of concrete casting surround: 365 x 130 x 133 mm, weight: 0.31 kg; halogen-free product



ZS_ONL_F_RESC_GEH_Beton.jpg



ZS_ONL_M_RESC_GEH_BETON.wmf